



**Camberwell Probus Club
&
Glenferrie Probus Club**

Autumn in North-East Victoria

**4 Day Coach Tour visiting
Bright, Mount Buffalo, Beechworth, Yarrawonga,
Rutherglen and the Goulburn River**

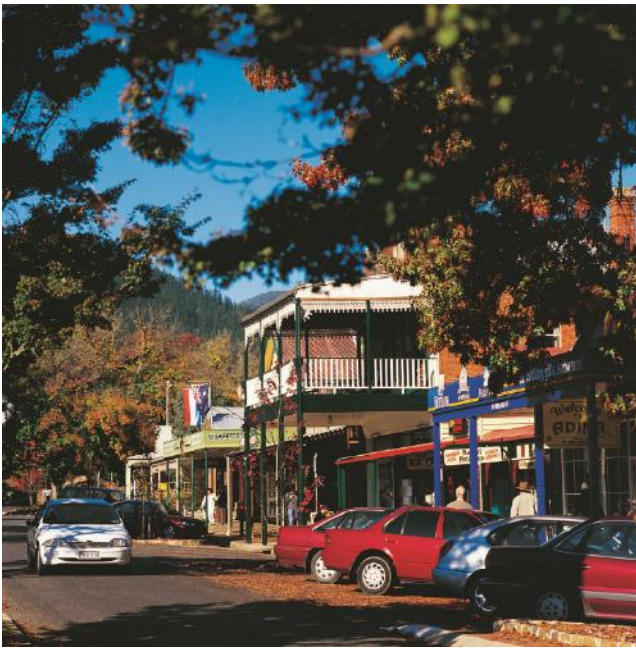
Monday 21 April – Thursday 24 April, 2025

North-Eastern Victoria is a region of spectacular natural beauty. Amidst the High Country of the Victorian Alps - Mt Buffalo, Mt Hotham and Mt Bogong - fertile valleys are criss-crossed by streams, rivers and lakes. The scenery throughout this part of Victoria – the "High Country" as its often called - is as spectacular today as it was when early explorers Hovell and Hume made their arduous journey through this area in 1824, enroute from Sydney to Port Phillip. The base for our tour is the rural city of Wangaratta – a great place from which we will explore places like Beechworth - the one time home to 4,200 Chinese miners who re-worked the grounds of the Ovens gold fields. Of course gold attracted many different types, some of whom became notorious, such as Ned Kelly who was finally captured at Glenrowan.

Day 1: (LD): To the North East (Monday 21 April, 2025)

Welcome to our 4 **Day North Eastern Victoria Tour**. After loading the coach and completing our pick up service we head north along the Hume Highway to **Benalla** where we stop at the local Golf Club for lunch. This afternoon – on our way to Wangaratta - we call at the **Milawa Cheese Company**, located in the historic **Murray Goulburn Butter Factory**, for a tasting. Our visit to Milawa also includes a visit to **EV Olives** where we will enjoy a talk about the produce, a walk in the olive grove and a chance to sample the olives, oils and tapenades. Then onto Wangaratta – our base for the next 3 nights. *(Meal inclusions: Club lunch/Dinner at motel)*

Quality Gateway Wangaratta 03 57218399 – 3 nights



Day 2: (BD): Beechworth, Bright & Myrtleford (Tuesday 22 April, 2025)

This morning we head over to **Beechworth** with a stop along the way at the tiny village of **Eldorado** to take a look at the only remaining gold dredge in Australia which is still moored in the creek. In **Beechworth** we will be joined by our locally based guide who will show us around this imposing historical town with many landmarks of the gold rush era still surviving. We then head over to **Bright**. Bright is one of Victoria's most attractive tourist destinations. The town is nestled in the beautiful Ovens Valley and surrounded by the towering Australian Alps. We have some free time for lunch and some personal shopping before a short guided tour with some history on this part of the High Country. This afternoon we travel through to **Myrtleford**, with a stop along the way at the little township of Eurobin to visit the **Red Stag Deer Farm** for afternoon tea. The farm was established in 1987 as a commercial Deer Farm. It is situated on a 375 acre property, bordering the **Mt Buffalo National Park**. In Myrtleford we have arranged a visit to the **Myrtleford Museum** containing many photographs and records of historical significance including district scenery, local industries, people and events. *(Meal inclusions: Breakfast & 2 course dinner in the motel)*

Day 3: (BLD): Corowa and Yarrawonga (Wednesday 23 April, 2025)

Today we make our way north to **Corowa**, the small town on the New South Wales side of the Murray River. We stop in at the **Federation Museum** to see the collection of material relating to the Federation of Australia and the part Corowa played in its development. Following our tour we head to **Yarrawonga** where we join the **Paradise Queen** for a morning tea cruise on **Lake Mulwala**. The Lake is dominated by a vast number of trees standing in the water and the lovely homes along the foreshore. Lake Mulwala was formed by the completion of the Yarrawonga Weir, which in turn was part of the massive Lake Hume project to harness the waters of the Murray for irrigation. Lunch today is at Mulwala on the NSW side of the Murray. From here we move into the **Rutherglen Region** via the Victorian side of the Murray River. Gold was discovered in this area during the 1850s and 1860s with vines being planted around the same time. We top off the day with a stop at **Renaissance Chocolates**. We will hear about the Renaissance Chocolates story including a description of chocolate making while enjoying a cuppa. We then see a practical demonstration of the art of chocolate making – and of course we have to sample the produce! After a lovely day, we head back to our motel to relax before dinner. *(Meal inclusions: Breakfast & 2 course dinner in motel/Club lunch at Mulwala)*



Day 4 (BL): Home via The Mitchell Shire (Thursday 24 April, 2025)

Today we will be travelling home via **Shepparton** (with a stop at the SPC Factory Sales Outlet) and **Nagambie** in the **Mitchell Shire**. This 'geographical heart' of Victoria surrounds the Campaspe and Goulburn Rivers and contains many hidden treasures. **Nagambie** is home to legendary race horse **Black Caviar**, the mare that was born here in 2006 and finished her career unbeaten, winning all 25 of her races and claiming almost \$8 million in prize money. In October 2013 a full-size statue of the racehorse was unveiled in Nagambie and the town came to a stand-still as thousands of people, some dressed in the horse's racing colours of salmon and black, gathered for the ceremony. Trainer Peter Moody and jockey Luke Nolen were also there. Our **Farewell Lunch** (with a complimentary beer, wine or soft drink) is in **Seymour** before our final stop on tour. Just out of Kilmore is **The Meat Room** – a small-batch Salami Specialist using delicious free-range pork. We have arranged a tasting and brief tour before heading back to **Melbourne** to complete our 4 day tour. *(Meal inclusions: Breakfast in the motel/Pub lunch)*



Camberwell Probus & Glenferrie Probus

Presents

Autumn in North Eastern Victoria

4 Day Coach Tour

Monday 21 April – Thursday 24 April, 2025

Tour Price includes accommodation as per the itinerary, meals as indicated (B= Cooked breakfast, L= Light or packed lunch, D = Buffet or limited choice dinner), deluxe touring coach with seatbelts and attractions/entries as noted. The tour price (\$1185 per person sharing a twin or double room) is dependent on a minimum of 35 paying customers. Should the number of bookings not reach the minimum of 35 the following prices apply –

**Min 30 - \$1225 per person/Min 25 - \$1280 per person
Add \$320 for a guaranteed single room (On application)
(Prices valid until 30 April, 2025)**

Cancellation Policy

The deposit \$200 per person to secure booking is fully refundable up to 60 days from departure. Deposit paid is non refundable within 60 days of departure. Balance of payment is due 30 days prior to departure. For any cancellation within 30 days of departure there is an additional cancellation fee of \$200 per person. No refund inside 14 days. Please note, further cancellation fees may apply based on the timing of cancellation from third parties.

Travel insurance is strongly recommended to safeguard against loss due to cancellation resulting from an unforeseen event.

The itinerary may be subject to change without notice. Whilst every effort is made to adhere to the itinerary as provided, The Company reserves the right to alter the touring and attractions as dictated by circumstances and conditions outside the Company's control. Alterations may be made to ensure the smooth running of the tour and every attempt will be made to ensure alterations do not adversely affect the operation of the tour. The Company will not be held responsible for any force majeure, weather-based, or third-party supplier cancellations and associated costs.